

# Newsletter | January 2018



AWARDED GOOD PRACTICE BY



## 2018 AGM with a difference

Our AGM this year will be very different and we hope it gets your support. We are going to make it an 'open' event in the sense that it will be 'open' to interested members of the public as well of course to members, but only members can vote in elections. We will advertise it widely e.g. in County Press and via posters as an opportunity for Isle of Wight residents to hear about what we are doing in respect of Prostate Cancer. There will be an information desk, opportunities for members of the public to talk informally with volunteer members who have experienced treatment etc. In addition Cancer Specialist Nurses from St. Mary's will be in attendance. The business (e.g. elections) of an AGM will be kept to a minimum in terms of allocated time. There will be a 'free' buffet and a bar (not free I'm afraid!).

The evening will conclude with a mini \*'race night' with the aim of raising funds. Our chairman who is experienced in running these race nights will be compering and of course the night also represents his last as Chairman of our Support Group. So we hope you will be able to pencil in your diary a commitment to attend. The date to ring in your diary/calendar is Thursday 19th April 6.15pm at Newport Football Club.

*\*Race nights are enjoyable ways of raising funds. They involve films of actual races held in the UK. You can place a bet on your chosen horse and if it wins get a good return on your investment. The Support Group cannot lose because 50% of all the money bet is retained for the charity. The races will be sponsored by Island firms/organisations/individuals. The 8 horses in each race will be sold at a cost of £5 per horse. The winning owner will win the sponsored prize.*

## ASDA Supporting IOW Prostate Cancer Support Group

We are pleased to report that during January, February and March the new Island Supermarket, ASDA have chosen our group as one of three local charities. You may be familiar with the 'token' system whereby customers receive tokens with their shopping. They can then select one of three 'bins' in which to deposit their token. At the end of the 3 months the division of a donation by ASDA will be determined by the share of the tokens decided upon by customers of course. So when you do your shopping at ASDA please look out for the opportunity to place your tokens in 'our' bin. As their current slogan goes, "Save Money, Live Better" – hopefully with the funds raised we can do exactly that and help men affected by Prostate Cancer to live better!

**Please support this campaign and tell your family about it.**

**The charity that gets the greatest tokens benefits with the largest donation so every token counts.**

## Cycle to the Moon

The idea is to raise as much as possible towards the target of £250,000 (one pound for every mile from here to the moon). We have received the following message from 'Tackle' – 'Tackle Prostate Cancer have appointed Dave Fergus, an experienced event manager and fundraiser, to manage the overall project and work with our support groups, the sports and cycling communities and potential sponsors. We hope to organise the 'Cycle to the Moon' event next May/June. I hope that as many of our groups as possible in the Federation take part, whether it is sponsoring someone to ride in a

cycling event we hope you are able to organise or indeed just members or their families cycling in the gym. A lot of preparatory work is required and we will be working through our regional set-up as well as with individual support groups to ensure maximum support. Dave will be contacting a few groups as he prepares his plan. We are looking forward to our first national fundraising event, and in particular, putting in place the necessary funds from the event to sustain our 'Save a Dad' campaign with Secondary Schools – more about that later. Thank you for your continuing support'.

## Media Help

This may be a long shot but if you are someone who has experience in dealing with the 'media' and you would be willing to devote occasional time to assist us in dealing with the media then we would love to hear from you. This is very much a specialist area and there are occasions when greater expertise would be appreciated. For more information please contact Dave Kiely on 407662.

## New Year's Day Dip

The New Year's Dip in aid of the 'Daisy Bus' went well with a large group of supporters led by the lead nurse for cancer, Anne Snow, plus many others from St Mary's Hospital and Macmillan. In dreadful winter conditions they braved the elements and raised somewhere in the region of £1500. Well done all concerned.

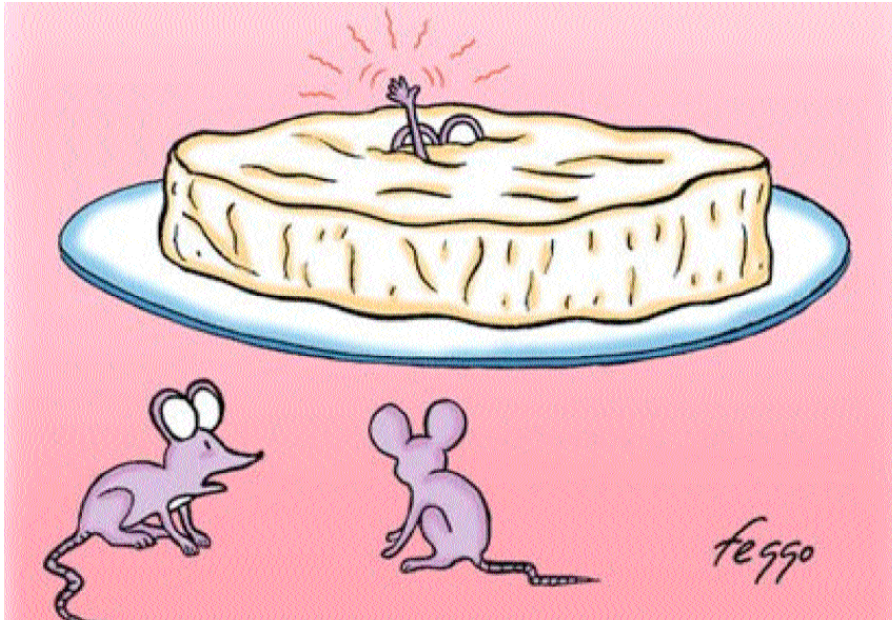
## The Social Scene

A number of members have told us that they are unhappy travelling late at night in January and February due to the inclement weather, so we are proposing to run a **lunch with live music and a Quiz on Feb 21 at the Waverley Inn from 1pm until 3pm with soup and a crumble £7. 50 a ticket.** We hope to see as many as possible there.

And for those of you whose new year's resolution was to be more active, a sea front **walk at Ryde is being organised on Sunday March 22 starting at 11am**, entry by donation.

Thanks again for your support for all our events and especially the Christmas Dinner in which over 50 attended.

Alan and Geoff



*That's why I avoid Brie!*

## Research Opportunity

We have received a request from Liberating Research, a London-based agency which gives voice to patients living with chronic conditions, their families and the associations that represent them. They are working with The Research Partnership which is running a study on metastatic castrate resistant prostate cancer. They are interested in hearing from any patient currently in treatment, who would be willing to share their experiences of treatments and the support they have received (or not received) in a 1-hour telephone interview with one of our experienced moderators. The study has been commissioned by a pharmaceutical company which is

developing a digital device designed to help prostate cancer patients manage their medication routine, and they would like to know if there are any patient needs that could be met through this device. As a thank you for their time and for sharing their experiences, participants would receive a £60 incentive, of which 10% would be donated to the Isle of Wight Prostate Cancer Support Group. If there is anyone you think might be interested in participating, please do feel free to share the link below, please contact them on the following link: <https://www.liberatingsurveys.com/en/enquire/86>

---

## The Daisy Bus

You will be familiar with the Daisy Bus chronicles. We have been invited to a meeting on January 25th at the Hovercraft to discuss plans to place the funding of the Bus on a sounder footing than it has been in previous years. We will keep you informed.

---